

Corporate Office  
**CHENNAI**

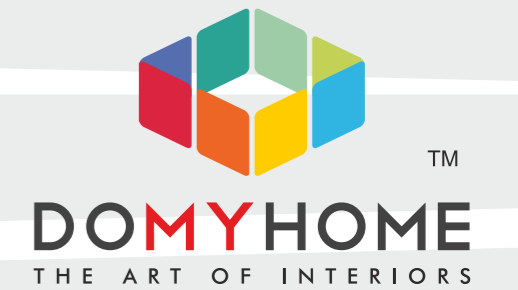
Casa Interior Studio Private Limited  
47A North Phase, SIDCO, Thiru Vi Ka Industrial Estate,  
Ekkaduthangal, Chennai - 600 032.  
(Kalaimagal Nagar), Behind Jaya TV.  
we.care@domyhome.in

Bangalore office  
**BANGALORE**  
No. 34/1, 4th Floor,  
Meanee Avenue Road,  
Opp. Lakeside Hospital,  
Ulsoor Road,  
Bengaluru - 560 042.

[www.domyhome.in](http://www.domyhome.in)

Showroom  
**CHENNAI**  
Ground Floor, 47 - A North Phase  
SIDCO, Thiru Vi Ka Industrial Estate  
Ekkaduthangal,  
Chennai - 600032  
we.care@domyhome.in

STEPPING  
INTO YOUR  
**NEW HOME**  
MADE EASY





## ABOUT CASAGRAND



Casagrand Real Estate Enterprise is committed to building aspirations and delivering value.

In the last thirteen years, we have developed over 9 million sft of prime residential real estate across Chennai, Bengaluru and Coimbatore. 68 landmark properties and over 4000 happy families stand testimony to our commitment.

In line with our philosophy of creating superior living spaces that reflect our belief, we also offer tastefully chosen plotted development spaces in select locations.

In the fourteenth year of our journey, we at Casagrand are all set to progress further forward with projects worth over ₹6500 crore in the pipeline.





## ABOUT US

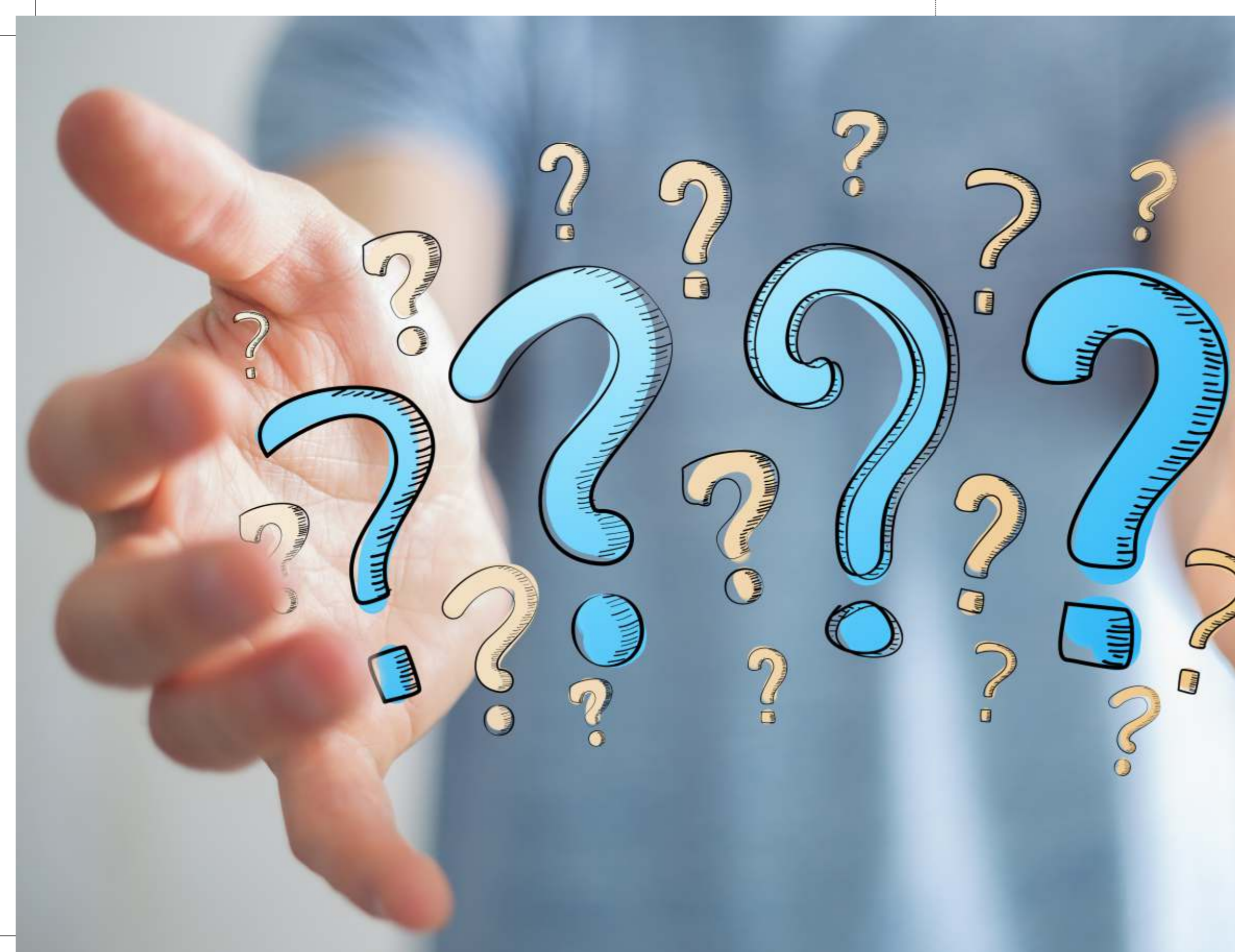
Do My Home is a venture of Casagrand Builders Private Limited. Started with a clear objective of solving the hassles experienced by home buyers in moving into a new home, right from the time the key is received from the builder to completion of all interior work.

Specialized in solutions such as Kitchens, Wardrobes, Crockery & entertainment Units, Electrical fittings, Curtains, Bathroom accessories, Painting, False ceiling and Wooden flooring. With over 3025 products for all your home needs DoMyHome has transformed more than 2000+ homes and beautified more than 1,50,000 sq.ft with elegant interior spaces.

The state-of-the-art factory spanning over 15,000 sq.ft. equipped with skilled manpower ensures utmost quality and timely delivery. A process driven delivery mechanism and customer service team ensures hassle-free experience in getting all home interior needs fulfilled.







## HASSLES IN SETTING UP A NEW HOME

- No one-stop-shop for all your interior needs
- Choosing the right product from right brands
- Hassles in supervision and coordination
- Getting the designing right
- Risk of quality output
- Delay in Delivery



## WHY ARE WE, A CUT ABOVE THE REST



Kitchen, Wardrobe, Bathroom accessories & aesthetics all under one roof



More than 100 quality checks for superior quality, strength & durability



15,000 Sqft of state of the art factory for superior finish & process control



Only branded products used to ensure the longevity of the furniture - Merino/Action Tesa/ Faber/Bosch/Siemens/iLED



9001:2016 ISO certified inhouse manufacturing unit to ensures quality standards



More than 50 customizable designs available based on your needs & aspiration- kids friendly, senior citizen friendly & specially able people friendly



4000 sq.ft. of showroom in Chennai to give you the experience of touch & feel of your Home interiors



5 years warranty on all wood works against manufacturing defects



More than 2000 Kitchens & Wardrobes handed over in the last 5 years



Dedicated design team for innovation & consulting

Wide range of branded accessories; Hettich/Godrej to ensure the best utilization of space in Kitchens & wardrobes



Each house is designed keeping in mind the aesthetic elements of individual's personality



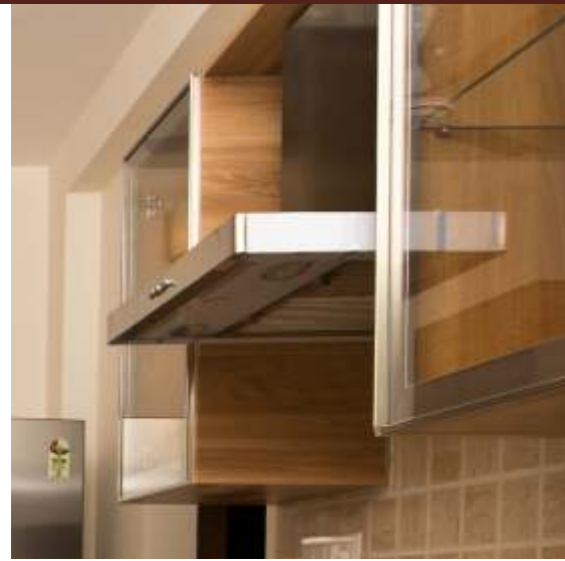
Delivery and installation of kitchens and wardrobes within 60 days



# KITCHEN BY DOMYHOME

Our kitchens are designed to be well-organised and efficient on the inside; with easy access drawers and a wide range of accessories that ensure each and every inch of your kitchen is well-utilised.





## PARALLEL KITCHEN HONEY OAK

Specially designed for narrow kitchen layouts, the Parallel and Island kitchens give you two separate cooking areas. One for prepping and one for cooking, with ample space between them. Organised and clutter-free, these kitchens are a dream come true when you are experimenting with new types of cuisines.

- Base unit door finish - Matt laminate
- Wall unit door finish - Clear glass with aluminium frame shutter
- Handle - Modern style
- Counter top finish - Granite
- Appliances - SS Hob, SS Chimney, SS Sink, wall mounted SS faucet, Built-in microwave & Built-in oven





## PARALLEL KITCHEN **ROUGE**

- Base unit door finish- Glossy laminate
- Wall unit door finish – Lacquered glass shutters with aluminium frame
- Handle – Built-in G-profile
- Counter top finish – Granite
- Appliances – SS Hob, SS Chimney, SS Sink & Sink mounted SS faucet







## PARALLEL KITCHEN WHITE PINE

- Base unit door finish - Glossy Acrylic
- Wall unit door finish - Clear glass shutters with glossy wooden border frame
- Handle - Modern style
- Counter top finish - Granite
- Appliances - White glass Hob, White glass Chimney, SS Sink & wall mounted SS faucet



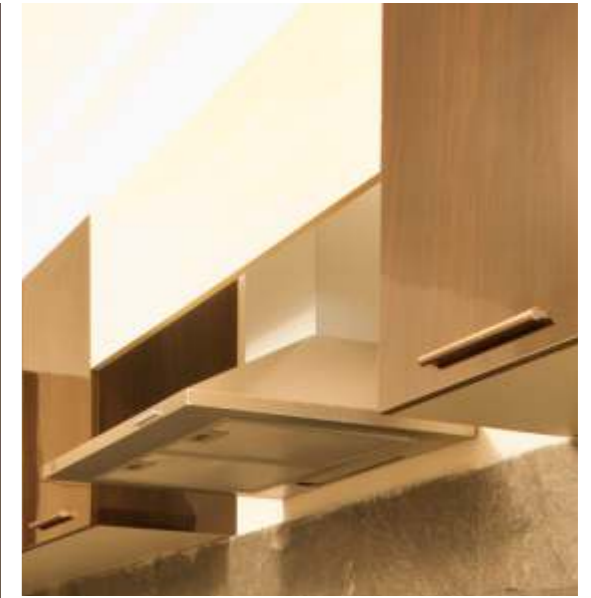




## 'L' SHAPED KITCHEN BOURNVILLE

One of the most popular kitchen layouts, the space saving 'L' shaped kitchen will always give you enough breathing space irrespective of the size of your kitchen. Organise your kitchen in a left-right format that will help you work more efficiently as you cook up those amazing dishes at home.

- Base unit door finish- Glossy laminate
- Wall unit door finish - Glossy laminate in different colors
- Handle - Modern style
- Counter top finish - Jet Black Granite
- Appliances - Black glass Hob, SS Chimney, SS Sink & Wall mounted SS faucet







## 'L' SHAPE KITCHEN **CAPPUCCINO**

- Base unit door finish - PU high gloss
- Wall unit door finish - PU high gloss with 2 levels of clear glass shelves
- Handle - Built-in grip handle
- Counter top finish - Granite
- Appliances - SS Hob, SS Chimney, SS Sink & Wall mounted SS faucet







## 'L' SHAPE KITCHEN IVORY SLATE

- Base unit door finish – PU coated High Gloss
- Wall unit door finish – PU coated High Gloss
- Handle – Modern style
- Counter top finish – Solid surface
- Built-in appliances – White glass hob, Slant white glass Chimney, Built-in microwave, Semi-integrated dishwasher, SS sink & counter top mounted SS faucet







## 'C' SHAPE KITCHEN WITH BREAKFAST SETUP YIN YANG

Spread out across three walls, the 'C' shaped kitchen puts you in the centre of your work space. Giving you easy access to three zones that can be organised according to your preference. This efficient and compact design is ideal especially when you're cooking a complete meal for those hungry tummies at home.

- Base unit door finish - Glossy laminate
- Wall unit door finish - Glossy laminate & Frosted glass with aluminium frame
- Handle - Built-in G profile
- Counter top & breakfast top finish - Granite
- Appliances - SS Hob, SS Chimney, SS Sink & Sink mounted SS faucet





# USP OF THE KITCHENS



Rigorously tested to comply with the highest standards of Quality & Durability



Customized Accessories & designs for specially able people



5 years warranty on all wood works against manufacturing defects



Wide range of Hettich accessories to optimize the storage space



Cabinets used are Termite proof & stain resistant



Delivery & installation within 60 days







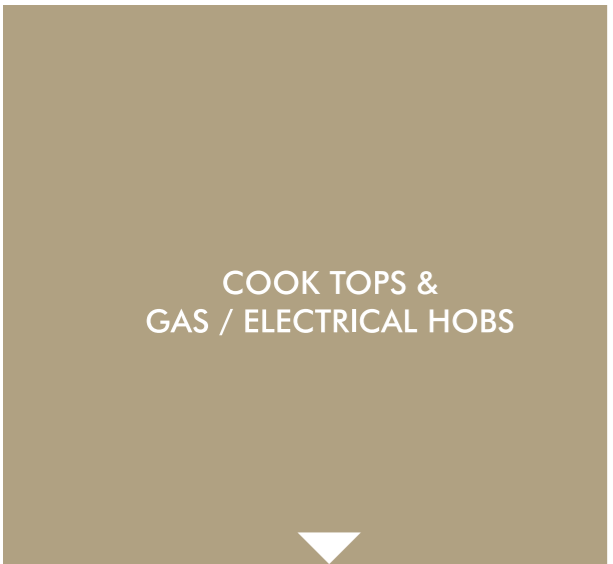
FACTORY MADE MODULAR  
KITCHEN CABINETS  
& SHUTTERS



SINKS & FAUCETS



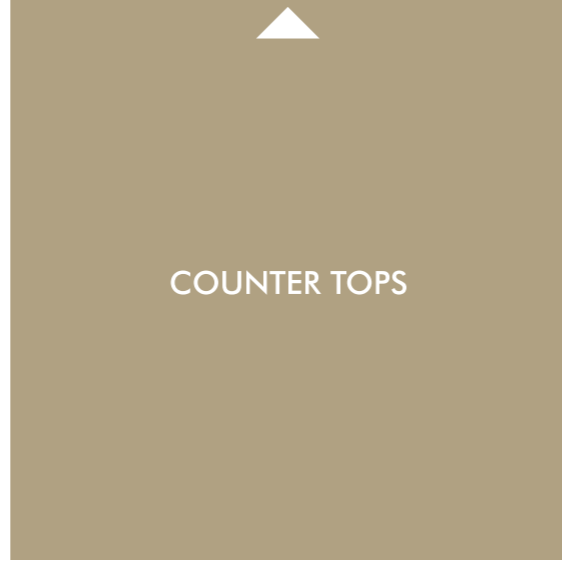
HANDLES



COOK TOPS &  
GAS / ELECTRICAL HOBBS



**KITCHEN  
FITTINGS**



COUNTER TOPS



**KITCHEN  
FITTINGS**



BUILT-IN APPLIANCES:  
HOB, MICROWAVE, OVEN  
& DISHWASHER



DRAWER SYSTEMS &  
MIDWAY ORGANIZERS



INTERNAL ACCESSORIES





**WARDROBE  
BY  
DOMYHOME**





## MIDNIGHT GLOW

Sliding wardrobes are Elegant, Stylish and space saving storage solutions, especially useful in today's compact homes. Combined with mirrors or colour coded designs, they can add a sense of space and aesthetics to the bedroom.

The full height sliding glass doors on the Midnight Glow set are the perfect example of this. Creating an illusion of extended empty space in the room, while adding a touch of contemporary elegance.

- 2 door Sliding Wardrobe
- Linear in shape
- Front door finish - Lacquered glass doors with titanium finish thin joinery strip
- Sliding type with Inline titanium finish channel and track
- Handle – Built-in titanium edge profile
- Accessories: Cloth hanger, pullout drawers, shelves for folded clothes

## AMBER

- 2 door Sliding Wardrobe: Linear in shape
- Front door finish - Bronze mirror finish on top & bottom with center panel in white lacquered glass
- Sliding type - Inline titanium finish channel and track
- Handle - Built-in titanium edge profile
- Accessories: Cloth hanger, pullout drawers, shelves for folded clothes.







## COFFEE ROAST

- 2 door sliding wardrobe with loft & dressing area - Linear in shape
- Front door finish - Matt laminate
- Sliding type - Inline chrome finish channel and track
- Handle - Built-in edge handle in the centre
- Accessories - Cloth hanger, pullout drawers, shelves for folded clothes

## IVORY

The Swing Door wardrobes offer you access to the entire wardrobe at the same time. The ideal storage solution for a busy lifestyle, this style of wardrobe also offers you more space to add small pegs and other space saving fixtures that could be extensively used.

The four door, with loft shutter design of the Ivory wardrobe uses this space to the maximum. Giving you an elegant cream space that fits perfectly into the mellow colours of your bedroom.

- 4 door Hinged Wardrobe with loft shutters
- Linear in shape
- Front door finish- Cream matt laminate
- Handle - Modern & versatile in nature with contrast color to match the dresser unit color
- Accessories: Cloth hanger, pullout drawers, shelves for folded clothes







## SAND CASTLE

- 3 door Hinged Wardrobe with 4 door loft shutters & open corner shelves
- Linear in shape
- Front door finish - Matt laminate with mirror in center for dressing
- Handle - Modern style in chrome finish
- Accessories - Cloth hanger, pullout drawers, shelves for folded clothes. Provision given for laptops, bags to keep in the corner shelves.

## MOCHA LATTE

- 4 door Hinged Wardrobe with 4 door loft shutters & TV/study unit: Linear in shape
- Front door finish - Matt laminate with full height mirror in center for dressing, finished with wooden frame all around the mirror
- Handle - Modern standard in chrome finish
- Accessories - Cloth hanger, pullout drawers, shelves for folded clothes. Provision given for TV, laptops and drawers for study stationery items







## CREME BRULEE

- 4 door Hinged Wardrobe with 5 door loft shutters: Linear in shape
- Front door finish-Matt laminate with mirror in center with frame all around for dressing
- Handle - Modern standard in chrome finish
- Accessories: Cloth hanger, pullout drawers, shelves for folded clothes



HANDLES



PULLOUT SHIRT TRAYS,  
DRAWERS & PULLOUT  
TROUSER RACK



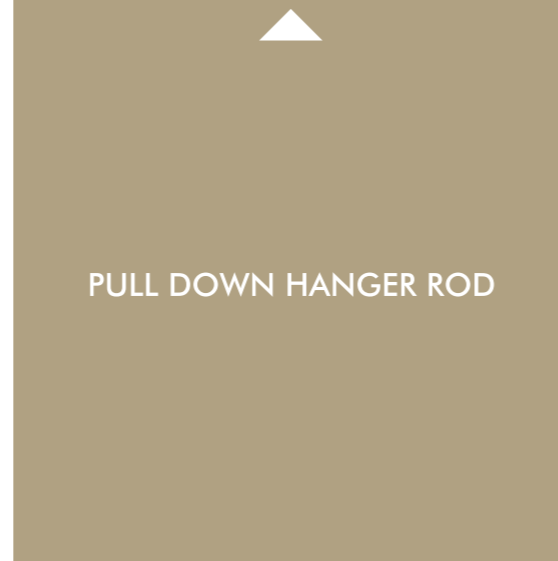
PULLOUT TROUSER  
& SAREE HOLDER



PULLOUT  
MIRROR



**WARDROBE  
ACCESSORIES**



PULL DOWN HANGER ROD



**WARDROBE  
ACCESSORIES**



PULLOUT TROUSER RACK



CLOTH HANGER ROD



DRAWER ORGANIZER &  
PULLOUT SHOE RACK

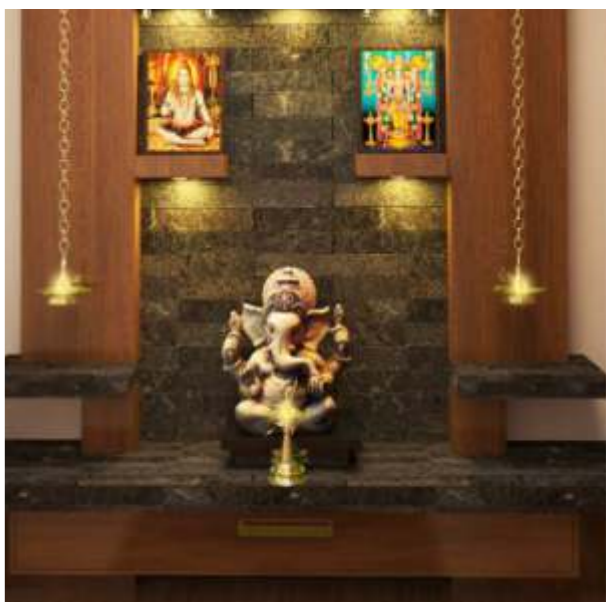






# OTHER MODULAR WOOD WORKS

- TV units
- Pooja concepts
- Crockery units
- Study units
- Shoe racks





## OTHER SERVICES

- Electrical & plumbing work
- Light fixtures
- Wooden flooring
- Bathroom shower partitions & accessories
- Curtains & curtain rods
- Loose furniture







**OUR  
WORKS**







**OUR  
PARTNER  
BRANDS**



ACCESSORIES



APPLIANCES



PRODUCTS



LIGHTING



LAMINATES

